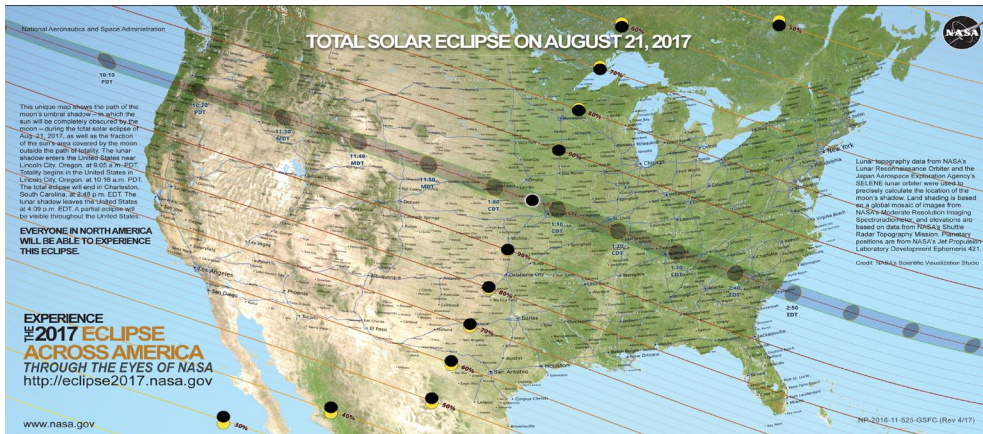


Salukis in the Eclipse's Amazing Path



FEATURES

- SALUKIS IN THE ECLIPSE'S AMAZING PATH
- THE CHAIR'S MESSAGE
- BETHE FIRST ONES!
- NAVAL STATION MAYPORT LITTORAL COMBAT SHIPS
- NS MAYPORT STUDENT AND STAFF IN THE SPOTLIGHT
- WED ALUMNI AND SIU ALUMNI ASSOCIATION
- IMPORTANT DATES
- JOBS OF THE MONTH
- FALL SEMESTER REGISTRATION

The solar eclipse on Aug. 21 is approaching and people around the world are excited. While the path of totality will extend in the United States from Oregon to South Carolina, Salukis will be the most privileged because it reaches the greatest duration in our backyard, a few miles south of the SIU Carbondale campus. At SIU Carbondale, the eclipse will begin at 11:52 a.m., with the total solar eclipse's longest duration – where the moon completely covers the sun – at two minutes and 40 seconds, starting at 1:21 p.m. Ernie Wright, NASA media specialist, explains the factors that determine the shape and duration of the umbra on an [interactive scientific visualization](#).

Workforce Education and Development locations that will experience the total eclipse are Carbondale, Scott Air Force Base, Belleville, Ill, and Joint Base Charleston, S.C. To find out about the eclipse in your town, click on this [NASA interactive map](#).

Be well prepared to experience this amazing phenomenon. That includes using appropriate eye protection. According to NASA, people do not want to look directly at the sun without appropriate protection except during the few moments of total solar eclipse totality. There are many ways to safely view an eclipse of the sun, which includes a filtering device or indirect viewing. Information on how to safely view an eclipse is [here](#). David Baron (author of The Total Eclipse of 1878) told NPR's Scott Simon: "A total eclipse is completely different from anything else you've ever experienced. During a total solar eclipse, when the moon completely blocks the face of the sun and it goes dark in the middle of the day, that is the only time when it actually is safe to look up toward the sun with the naked eye. The blue sky gets ripped away, and you can actually stare toward the center of the solar system, see the planets, see the stars in the background - the brighter ones. And you can actually see the sun, not the bright surface but the sun's outer atmosphere which shimmers like a glorious wreath of tinsel in space." (Source: <http://tinyurl.com/y7ncc5y3>)

Donate to WED

Share  Tweet 

The Chair's Message



Barbara Hagler, Workforce Education and Development interim chair

August Greetings! I became interim chair of Workforce Education and Development on July 1. I have been a faculty member for 30 years and have had the opportunity to teach at most of the off-campus locations where we offer degrees. It was always fun to see new places and meet new students. I have served as director of graduate programs and WED's undergraduate coordinator, and am again filling those roles while serving as interim chair. I am fortunate to have great faculty and staff to help me learn my job.

I hope you are having a great summer and maybe had the opportunity for a vacation. Carbondale is getting ready for the big solar eclipse on Aug. 21. It will be something to remember (especially if the weather cooperates).

Congratulations to any of you who are graduating in August! I wish you well as you continue your education or your career. Remember to let us know what you are doing - we like to keep up with all the great things our graduates achieve. We are so proud of you and your accomplishments.

Take the time to read the rest of this newsletter to find out what is happening with WED, especially at Naval Station Mayport in Florida.

Barbara Hagler

Be the First Ones!

Be the first ones to send us the photo of your class. Send us a group photo identifying your classmates and others appearing on the photo. Your photo will appear in the newsletter September issue.



Students in WED469 class at Scott AFB. Also pictured, Dr. Barnett (back row, left), Dr. Reese, Instructor, and Jessie Slaughenhaupt, academic advisor, (back row, right).

Dear WED Alumni:
We would like to keep in touch with you. Please tell us where you are and what you are doing, include a photo if possible.

[Submit your information here.](#)

NS Mayport Littoral Combat Ships (LCS)



The splashing launch of the USS Billings.

Since the arrival of the USS New York in July, the new littoral combat ships (LCS) fascinate all of us at the Mayport Naval Base. The LCS will conduct most missions performed by the Guided Missile Frigates (FFG), Mine Countermeasures Ships (MCM) and Patrol Coastal (PC) class ships, as well as MH-53E mine-countermeasures helicopters. The first LCS (USS Milwaukee) was commissioned in November 2015 and the second (USS Detroit) was commissioned on October 22, 2016.

Marinette Marine Corporation (MMC) was founded on the Menominee River in Marinette, Wis. in 1942 as part of the growth in the American shipbuilding industry during World War II. Since its founding, Marinette Marine has produced more than 1,300 vessels. While primarily a producer of commercial vessels, it has also taken a number of contracts for the [United States Navy](#), which became part of a team with [Lockheed Martin](#) to produce the [Littoral Combat Ship](#) designs for the Navy.

The LCS class consists of two variants, The Freedom variant and The Independence variant. The Freedom LCS are homeported at the Naval Station Mayport. The Independence variants are homeported in San Diego. The Littoral Combat Ship is the Navy's newest class of warship.

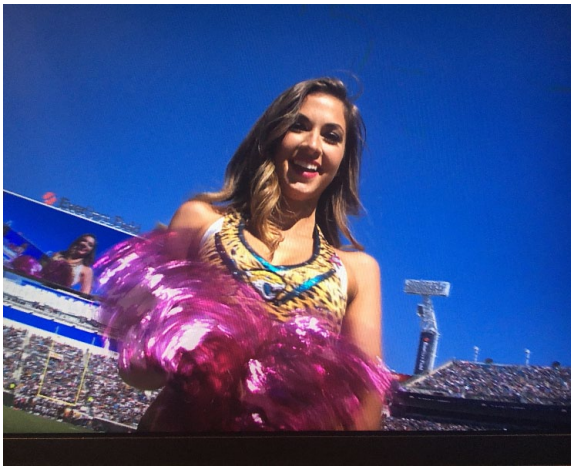
Mayport Student and Staff in the Spotlight



Sally Haynes, liaison for NS Mayport.

Sally Haynes, liaison for NS Mayport, is celebrating her 22nd year with SIU!

Twenty-two years ago, Sally's brother, Peter, a Navy Education Counselor at the time, told Sally about the opening at Mayport, and that it would be a perfect job for her. It was! Entering the military community has proven to be very rewarding. Sally is passionate about the importance of continuing education. When asked about Sally, people use the words "care-giver," "kind," and "devoted" to students. Thank you for your 22 years of great service, Sally!



Emily Kubowicz, WED student at Mayport Naval Station.

Mayport’s Summer 2017 is brightened by a Jaguar!

The NFL’s Jacksonville Jaguars shine just a bit brighter along with Classroom “A” at Naval Station Mayport. Emily Kubowicz, 23, is the wife of a United States Marine, research analyst for a medical supply company, and a Jaguars’ cheerleader.

Emily studied ballet and point from the ages of 3 to 17 years old, with ambitions to dance professionally one day. At 17, however, she injured her hip and believed her dreams of dancing had to come to a sudden end. After undergoing surgery and months of physical therapy, however, Emily’s perseverance beat the odds. Doctors had told her she would never be able to dance again. But her passion for dance kept

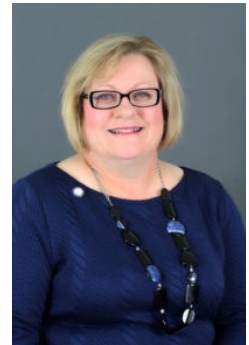
her going and working harder than she imagined possible, and she became an NFL cheerleader. Living out her dreams made all of the hard work worth every second and built her into the person she is today -- Determined!

Emily said, “I am extremely honored to be a student at Southern Illinois University’s off-campus WED program at Mayport Naval Station and to be able to stand behind their strong support of our military that they so adamantly hold. I look forward to being an SIU graduate just like my mother-in-law”

Emily shows the same determination in the classroom!

WED Alumni

KELLY CHANEY MS.Ed. '04, Ph.D. '10 has been named associate vice president for academic affairs and dean of graduate studies at Marian University in Fond Du Lac, Wis. Her appointment becomes effective in July. Chaney was dean of the School of Education at Marian University. She previously worked as a professor and interim provost at Blackburn College in Carlinville, Ill. Chaney received her master’s degree in workforce education and a doctoral degree in educational administration and higher education from SIU Carbondale.



DAVID FABIANSKI '09 has been named chief executive officer of Apex Companies, which specializes in full-service water resources, environmental services and safety specialists. Fabianski joins Apex from Rite-Solutions, Inc., where he served as president during a successful period of growth and transformation. Prior to that, he was senior vice president of Vangent, Inc., where he led the commercial and international division. His industry experience includes work in aerospace, financial services, government, oil and gas, retail, and international markets. Fabianski received his bachelor’s degree in workforce development from SIU and an MBA from Northeastern University in Boston, Mass.



Content and photography are courtesy of the SIU Alumni Foundation.

SIU Alumni Association

Whether you graduated or are a student, you always may join the Association. Your benefits are great and, above all, you will develop strong connections with other Salukis wherever you are in the world.

[Submit your membership request](#)

June 2017 — Important Dates

Monday, 8/21:	Semester begins (classes cancelled that day due to the total solar eclipse)
Sunday, 8/27:	Deadline to register for full-term Fall classes

IMPORTANT NOTE: If you have not yet registered for fall semester courses, contact the program advisor for your location and register as soon as possible. Course enrollment numbers are critical to course offering. For a complete listing of fall courses, visit registrar.siu.edu and select Schedule of Classes.

For SIU events, click on [Events Calendar](#).

Jobs of the Month

- Instructional Designer – Sitel Operating Corporation, Miami, Florida [Read more](#)
- Instructional Designer – Gemological Institute of America, Inc., Carlsbad, California [Read more](#)
- Technical Trainer – WatchGuard Technologies, Seattle, Washington [Read more](#)
- CAD Designer – Noblis, Saint Louis, Missouri [Read more](#)
- Training Specialist – University of Chicago, Chicago [Read more](#)
- Curriculum Developer – Class100 (in Chengdu), Chicago [Read more](#)
- Human Resources Coordinator – H&M, Burlington, New Jersey [Read more](#)
- Talent Development Specialist – ResCare, Columbia South Carolina [Read more](#)
- Corporate Training Specialist – Daimler, Atlanta [Read more](#)
- Professional Development Coordinator – Techflow, Inc., DoD, Hampton, Virginia [Read more](#)

FALL SEMESTER REGISTRATIONS

If you have not registered for fall semester classes, contact the [program advisor](#) for your location to register as soon as possible. Course enrollment numbers are critical to course offering decisions. Find complete listing of fall courses at registrar.siu.edu and select Schedule of Classes.

If you are not receiving this FREE online WED monthly newsletter, you may subscribe to receive your own directly.

[Subscribe here](#)

Department of Workforce Education and Development
Southern Illinois University Carbondale
Pulliam 212
Carbondale, IL 62901
(618) 453-3321

Share



Tweet



[Want to submit an article/ideas?](#)

[About WED](#)